

remarked further that this species *Branchinella kugenumaensis* was previously known only from East Asia. Thus the presence of this species in Gujarat is an interesting record. It was formerly recorded by Linder (op. cit.) in Madras, by Sanjeeva Raj from Madura (1952), and by Tiwari in Rajasthan (1965).

402, N. WAYNE ST.,
NORTH MANCHESTER, IND.,
U.S.A., 46962,
August 8, 1966.

E. M. SHULL

REFERENCES

- LINDER, F., (1941): Contributions to the morphology and taxonomy of the Branchiopoda Anostraca. *Zool. Bidr. Uppsala*, **20**: 101-302.
- SANJEEVA RAJ, P. J. (1951): The first record of the genus *Branchinella* Sayce in India and a new variety of *Branchinella kugenumaensis* (Ishikawa). *Curr. Sci.* **20**: 334.
- TIWARI, K. K. (1958): Diagnosis of a new species of the genus *Branchinella* Sayce (Crustacea: Branchiopoda: Anostraca) from Sambhar Lake, Rajasthan. *J. Bombay nat. Hist. Soc.* **55**: 585-588.

14. ON THE OCCURRENCE OF *PORCELLANELLA PICTA* STIMPSON (DECAPODA: ANOMURA) IN THE GULF OF KUTCH

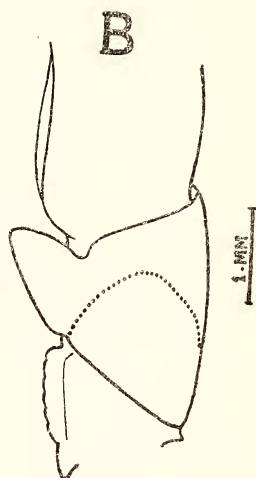
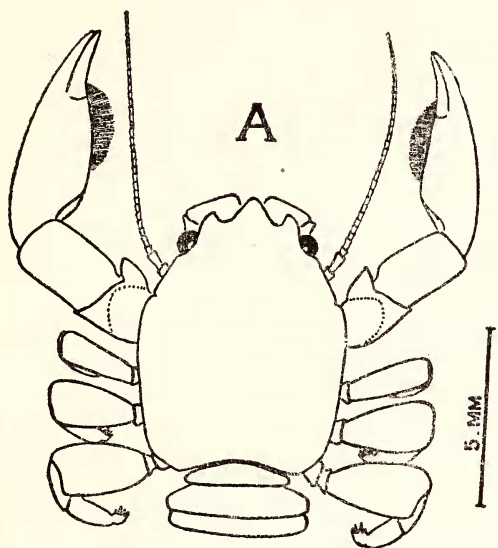
(With a plate)

Records of the genus *Porcellanella* from Indian waters are *Porcellanella picta* (Stimpson) from Rameswaram Island by Henderson (1893) and from Gulf of Mannar by Sankarankutty (1961), *Porcellana gaekwari* (Southwell 1909) from Gulf of Kutch on which Gravely (1927) remarked 'the biunguiculate feet of which clearly place it in the genus *Porcellanella*', and *Porcellanella haigae* (Sankarankutty 1963) from Gulf of Mannar.

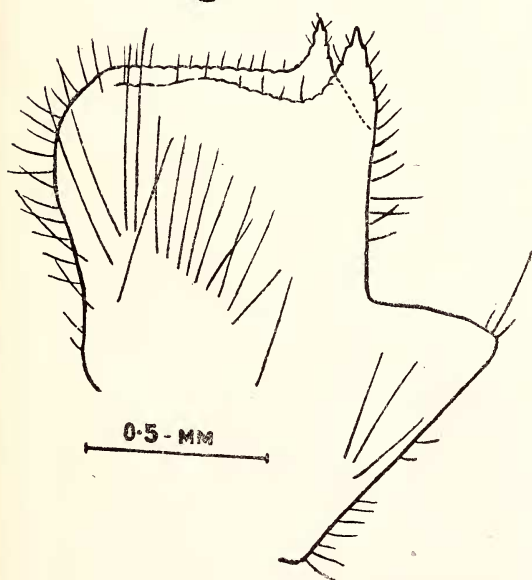
In June 1965 the author collected a number of porcellanid crabs found as commensals on a Sea Pen *Pteroides* sp. from the intertidal zone of the mud flat on the south-western side of Dabdaba Island (69° 11' 36" E., 22° 22' 10" N.) in Pindara Bay, Gulf of Kutch. These porcellanids were identified as *Porcellanella picta* Stimpson thereby extending the distribution of this species to the Gulf of Kutch and first record of the species from the west coast of India.

Each host (*Pteroides* sp.) harboured from 7 to 10 of these anomurans. In all 87 specimens were examined of which 37 were

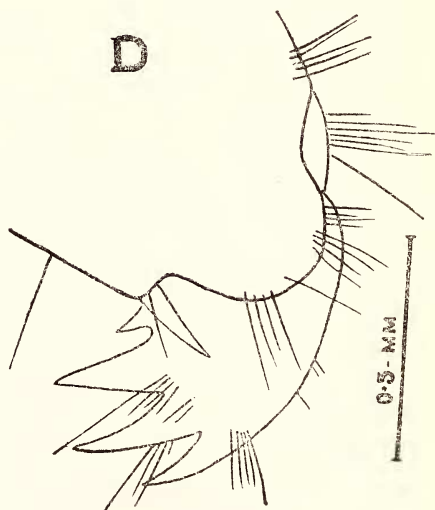
Ramanadan : *Porcellanella picta*



C



D



Porcellanella picta Stimpson

A. Female, B. Ischium and merus of cheliped, C. Basal antennular segment,
D. Dactylus of walking leg.